

**TCU**

**ALUMNI ASSOCIATION**

**JANUARY 16-27, 2021**

with optional

**BUENOS AIRES PRE-TOUR &  
IGUAZU FÁLLS POST-TOUR**

# ANTARCTICA DISCOVERY



**A MODERN POLAR EXPERIENCE**

**BE SURROUNDED BY PENGUINS, WHALES,  
AND SEALS ON THIS ADVENTUROUS VOYAGE  
TO THE 7<sup>TH</sup> CONTINENT ABOARD  
A BRAND NEW LUXURY SHIP**



# TCU ALUMNI ASSOCIATION

Dear Alumni and Friends,

Please join us for a once-in-a-lifetime adventure to experience the boundless beauty and pristine vastness of Antarctica. This remote continent and its precarious waterways have hosted some of the most courageous explorers in history, and have been the scenes of both triumph and tragedy since Captain Cook first sailed the region in 1773.

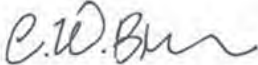
Embark from Ushuaia, Argentina, and cruise through the Drake Passage to the South Shetland Islands amid the Antarctic Peninsula—exploring the dramatic landscapes and remarkable wildlife that call this continent home. Trek through penguin rookeries, observe vast flocks of seabirds, learn about Antarctic ice conditions, and discover the sites of both past and present scientific expeditions.

Your expedition vessel for this amazing journey is the modern, 190-guest Ocean Victory, a nimble craft designed specifically for polar cruising—with large cabins, exceptional amenities, and a knowledgeable and friendly crew. Carefully selected specifically for this program, her small size provides the ability and agility to maneuver narrow channels and access bays that are closed to bigger vessels. The craft also boasts innovative new features including Rolls-Royce zero speed stabilizers and a patented X-Bow that offers a more comfortable and stable voyage.

This is a peak-season sailing for university and college alumni association travelers. With significant savings of more than \$800 per couple, we anticipate this program will fill quickly.


Reserve today online at [tcu.orbridge.com](http://tcu.orbridge.com), by calling (866) 639-0079 or by returning the enclosed reservation form.

Sincerely,



Carrie Wright Brown '00 '04  
Senior Director  
Alumni Relations

---

 Orbridge takes seriously the responsibility to minimize our global environmental impact. Each year we plant 100,000 trees in U.S. State Forests with afforestation needs as an on-going initiative among our evolving sustainability efforts. Learn more at [orbridge.com/going-green](http://orbridge.com/going-green).



# Your 12-Day Itinerary

Due to weather and ice patterns, itineraries are guidelines and may change in order to maximize wildlife and natural encounters.

- Day 1:** En Route from U.S.†
- Day 2:** Arrive in Ushuaia, Argentina (R)  
Welcome reception  
Overnight: Arakur Ushuaia Resort & Spa
- Day 3:** Ushuaia – Embarkation (B,D)  
Wildlife and iceberg viewing,  
Beagle Channel  
Overnight: *Ocean Victory*
- Days 4-5:** Drake Passage (B,L,D daily)  
Tierra del Fuego Archipelago,  
educational presentations  
Overnight: *Ocean Victory*
- Days 6-9:** South Shetland Islands /  
Antarctic Peninsula (B,L,D daily)  
Zodiac excursions, wildlife and glacier  
viewing, optional sea kayaking excursion  
Overnight: *Ocean Victory*
- Days 10-11:** Drake Passage (B,L,D daily)  
Lectures, time at leisure, special  
farewell cocktail  
Overnight: *Ocean Victory*
- Day 12:** Ushuaia – Disembarkation /  
Depart for U.S. (B)

**Activity Level:** This program offers a variety of activities including shore excursions and small boat cruises. We expect that guests be sure footed on stairs and ramps, be able to walk or hike at least one mile on uneven and slippery terrain, and be comfortable managing landings on various terrain and boarding small vessels—both from shore and the deck of the *Ocean Victory*. Ship staff will assist guests during each landing. On board, guests should be able to manage unexpected and unpredictable motion from the movement of the ship.

†NOTE: Travel time from/to U.S. may take up to two days depending on flight schedules.

(B = Breakfast, L = Lunch, D = Dinner, R = Reception)



# Discover

- Explore the South Shetland Islands and the Antarctic Peninsula, a beautiful island chain filled with an impressive variety of wildlife.
- Cruise aboard the perfect vessel for exploration. *Ocean Victory* is an Ice Class 1A super (equivalent to Polar Class 6), featuring 83% staterooms with balconies and a unique X-Bow ship design. The inverted bow quickens the Drake Passage crossing as it slices through waves, reducing rolling by 80%—and helping to prevent possible seasickness. This proven technology produces very low levels of noise and vibration.
- Explore at your own pace, with numerous passenger landings and explorations throughout the voyage, aided by a nimble fleet of Zodiacs and knowledgeable guides.

# Interact

- Enjoy the company and keen insights of expert expedition guides, scientists, and lecturers throughout the journey.
- Join the optional Sea Kayaking excursion (\$250 per person; limited availability). This is a one-time opportunity to explore the outstanding grandeur and magical beauty of the polar regions using a kayak. Participants must have prior kayaking experience.
- Take advantage of the ship's impressive amenities, including a heated infinity swimming pool, two hot tubs, spa, gym, lounges, outdoor bar, and interactive dining experience.

# What's Included

- 1 night luxury hotel accommodations (including breakfast) in Ushuaia prior to embarkation
- 9 nights accommodations onboard *Ocean Victory*
- A welcome reception and farewell cocktail
- All onboard meals
- 24-hour self-service coffee and tea facilities onboard
- All scheduled landings and excursions (subject to weather and ice conditions)
- Your own expedition parka to keep
- A pair of insulated rubber boots for shore landings for the duration of the cruise (to be returned prior to disembarkation)
- A digital voyage log (including a map of the ship's charted course, a list of wildlife spotted, and a photo album)
- All ship-board gratuities
- All luggage portage
- Port fees
- Transfers from the hotel to the ship or into town on the day of embarkation
- Group transfers for all guests arriving and departing during the suggested times

# Important Note

Due to the remote location of this tour, medical evacuation insurance is required with a minimum coverage of \$200,000. It usually costs between \$42 and \$125 per guest depending upon age and state the guest lives in. Orbridge's Guest Services team can assist with any questions regarding evacuation insurance.



## Onboard Accommodations

Accommodating 190 guests, *Ocean Victory* adeptly blends aesthetics, utility, and environmental responsibility to offer comfort, adventure, and sustainability in Antarctica.

*Ocean Victory* boasts the highest Polar code 6 and Ice class 1A designations, making it an ideal vessel for small-ship expedition cruising. Sturdy construction and a patented X-Bow design create excellent maneuverability and enjoyable travel by reducing seasickness, noise, and vibration.

All cabins are well-appointed and feature exceptional space, amenities, and a view of the ocean. Suite categories include exclusive complimentary amenities—butler and laundry service, and a well-stocked mini bar.

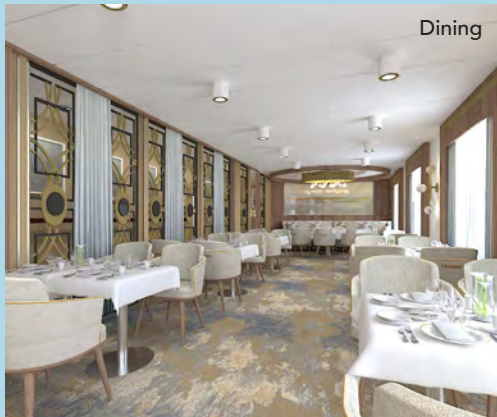
Built with an environmental focus, this vessel implements a green initiative program using only sustainable seafood, biodegradable laundry products, and removing single-use plastics. Special engine controls optimize speed and fuel consumption.



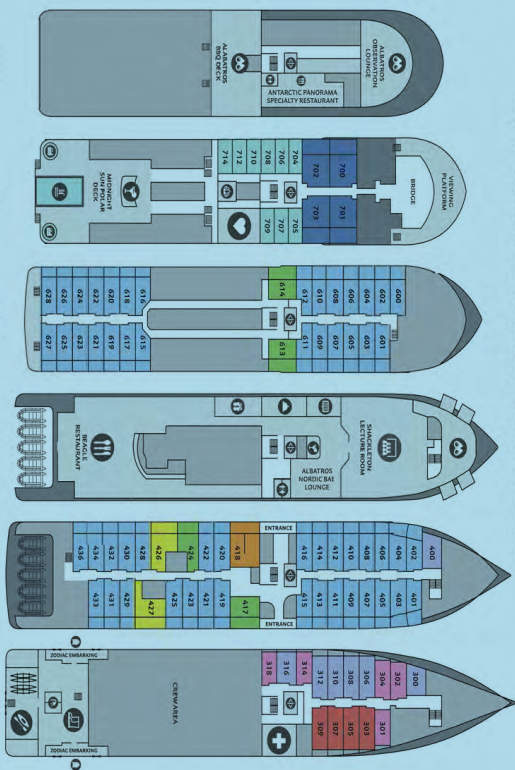
Sundeck



Observation Lounge



Dining





Each cabin offers exterior ocean views, individual climate control, closets, TV, writing desk and chair, and private en suite bathroom with bathrobes, shampoo, shower gel, and hair dryer. Each cabin can be configured as two twin beds or one king bed.



**D — Albatros State Porthole**

Porthole window (located on Decks 3 and 4—approx. 236 sq.ft.)



**E — French Balcony Suite**

Floor-to-ceiling windows (located on Deck 7—approx. 172 sq.ft.)



**C — Balcony State**

Private balcony with floor-to-ceiling windows (located on Decks 4 and 6—approx. 258 sq.ft.)



**B1 — Balcony Suite**

Sitting area and private balcony with floor-to-ceiling windows (located on Deck 4—approx. 376 sq.ft.)



**B2 — Balcony (Triple / Family)**

Sitting area and private balcony with floor-to-ceiling windows (located on Decks 4 and 6—approx. 301 sq.ft.)



**A — Junior Suite**

Additional sofa bed, sitting area, and private balcony with floor-to-ceiling windows (located on Deck 7—approx. 452 sq.ft.)



**PS — Premium Suite**

Two-bedroom suite, additional sofa bed, table and chairs, and private balcony with floor-to-ceiling windows (located on Deck 4—approx. 484 sq.ft.)



**G — Single Porthole**

Porthole window (located on Deck 3—approx. 193 sq.ft.)



**F — Triple Porthole**

Additional sofa bed with a porthole window (located on Deck 3—approx. 236 sq.ft.)

**ARAKUR USHUAIA RESORT & SPA**

Before embarkation, stay at the elegant and state-of-the-art Arakur Ushuaia Resort & Spa, perched atop an outcrop inside the Reserva Natural Cerro Alarkén. The property's design fulfills the standards of sustainable architecture, with each room featuring indigenous Argentine materials including copper, marble, stone, woods, and leather.





Optional Pre-Tour

## Buenos Aires



Experience summer in Argentina as you explore its sophisticated capital city, Buenos Aires—where rich historic sites, charming shops and restaurants, and welcoming locals create a splendid combination of old and new.

### Pre-Tour Itinerary *(subject to change)*

**Day +1:** En Route from U.S.

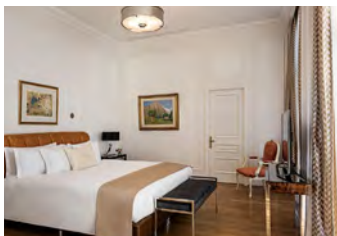
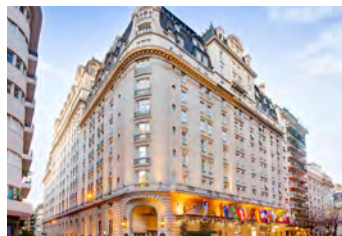
**Day +2:** Arrive in Buenos Aires (D)  
Special dinner and tango performance

**Day +3:** Buenos Aires / Guided Sightseeing /  
Leisure Time (B,Snack)  
Panoramic city tour, Recoleta Cemetery,  
Plaza de Mayo, Casa Rosada, the  
Metropolitan Cathedral, the Cabildo,  
afternoon and evening at leisure

**Day +4:** Buenos Aires / Flight to Ushuaia /  
Main Program (B)  
After breakfast, guests with a flight per the  
suggested time will take a complimentary  
group transfer to the airport for the flight to  
Ushuaia

### What's Included

- Two nights accommodations at Alvear Palace Hotel—pictured below—(or similar) with breakfast each morning
- Special 3-course dinner and tango performance
- Buenos Aires panoramic city tour
- All gratuities and portage
- All airport and hotel transfers  
*(NOTE: internal flight from Buenos Aires to Ushuaia is not included)*





## Optional Post-Tour Iguazú Falls



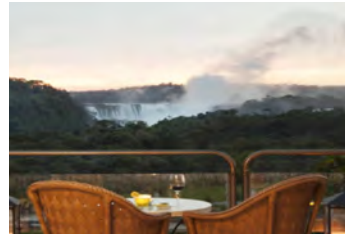
Hold on to your hat while you experience the thundering roar and huge clouds of spray from one of the most spectacular waterfalls in the world—that's four times the width of Niagara Falls and includes 275 separate falls.

### Post-Tour Itinerary *(subject to change)*

- Day 12:** Flight to Buenos Aires  
Leisure time at the hotel
- Day 13:** Flight to Iguazú Falls (B)  
Morning flight, afternoon guided tour of Iguazú Falls
- Day 14:** Iguazú Falls Tour (B)  
Full day guided tour, optional Gran Aventura Safari Boat Tour excursion, leisure time
- Day 15:** Iguazú Falls / Flight to Buenos Aires / Depart for U.S. (B)  
After breakfast, depart on the group transfer to the airport for the flight to Buenos Aires, where you'll connect with flights home

### What's Included

- One night accommodations at Alvear Icon Hotel in Buenos Aires and two nights at Meliá Iguazú—pictured below—(or similar) with breakfast each morning
- Two guided tours of Iguazú Falls
- All gratuities and portage
- All airport and hotel transfers
- Internal round-trip airfare between Buenos Aires and Iguazú Falls  
*(NOTE: internal flight from Ushuaia to Buenos Aires is not included)*





# Antarctica Discovery

**JANUARY 16-27, 2021**

Buenos Aires Pre-Tour: January 14-17, 2021

Iguazú Falls Post-Tour: January 27-30, 2021

## Reserve by Credit Card:

Online: [tcu.orbridge.com](http://tcu.orbridge.com)

Phone: (866) 639-0079

Fax: (206) 452-5655

## Reserve by Check:

Made payable to **Orbridge, LLC**

Mail to: Orbridge, P.O. Box 10339

Bainbridge Island, WA 98110

## GUEST INFORMATION:

Guest #1 Name (Title/Salutation): \_\_\_\_\_

Email: \_\_\_\_\_ TCU Grad Year: \_\_\_\_\_

Home Phone: \_\_\_\_\_ Alt. Phone: \_\_\_\_\_

Address: \_\_\_\_\_

City: \_\_\_\_\_ State: \_\_\_\_\_ Zip: \_\_\_\_\_

Guest #2 Name (Title/Salutation): \_\_\_\_\_

Email: \_\_\_\_\_ TCU Grad Year: \_\_\_\_\_

Home Phone: \_\_\_\_\_ Alt. Phone: \_\_\_\_\_

## DEPOSIT PAYMENT:

Check    ACH (Automated Clearing House)    MasterCard/Visa    American Express    Discover

Card #: \_\_\_\_\_ Exp. Date: \_\_\_\_\_ CVV: \_\_\_\_\_

Name (as printed on card): \_\_\_\_\_

Billing Address (if different from above): \_\_\_\_\_

City: \_\_\_\_\_ State: \_\_\_\_\_ Zip: \_\_\_\_\_

## CATEGORY SELECTION & DEPOSIT:

Category Preference: 1st choice \_\_\_\_\_ 2nd choice \_\_\_\_\_

# \_\_\_\_\_ guests joining pre-tour (\$500/person) +

# \_\_\_\_\_ guests joining program (\$2,500/person) +

# \_\_\_\_\_ guests joining post-tour (\$500/person) = **TOTAL DEPOSIT: \$** \_\_\_\_\_

## ANTARCTICA OPTIONAL EXCURSIONS (added to your final invoice)—**book early; limited space available:**

# \_\_\_\_\_ guests joining Sea Kayaking—one-time outing—(\$250/person)

I/we have read, understand, and agree to the full Terms & Conditions at [terms.orbridge.com](http://terms.orbridge.com) and detailed in program documents; and that Orbridge, LLC is authorized to charge my credit card above and/or take my/our deposit for this program.

Signature: \_\_\_\_\_ Date: \_\_\_\_\_

**Registration, Deposits and Final Payment.** To confirm and secure your reservation, a deposit of \$2,500 per person, a deposit for any extension(s), and any non-refundable advanced payments, payable by check, ACH, money order, wire transfer of same day U.S. funds, or major credit card, is due at the time of registration. Final payment, including any extension(s) and optional(s), is payable by check, ACH, money order, or wire transfer of same day U.S. funds and due no later than 150 days prior to the scheduled program departure date. If your reservation is made between the final payment due date and the date the program starts, the entire cost of the program, including any extension(s) and optional(s), is due at the time of registration by check, money order, or wire transfer of same day U.S. funds. Final payments made by credit card are subject to a 2% transaction fee. If final payment is not received by Orbridge by the final payment due date, Orbridge may, at any time and with or without notice, cancel your reservation in its sole discretion with no right of refund. All payments we receive from you are herein defined as "Payments."

CST#2098750-40 WST#602828994

**Cancellations and Refunds.** All cancellations must be submitted to Orbridge in writing and will be subject to a cancellation fee ("Cancellation Fee") as follows: (a) if the cancellation notice is received by Orbridge 305 or more calendar days prior to the scheduled departure date, all deposits will be fully refunded; (b) if the cancellation notice is received by Orbridge between 304 and 245 days prior to the scheduled departure date, the Cancellation Fee will be \$500 per person per program and \$300 per person per program for extensions; (c) if the cancellation notice is received by Orbridge between 244 days prior to the scheduled departure date and the day before the final payment due date, the Cancellation Fee will be the full deposit per person per program including any extension; (d) if the cancellation notice is received by Orbridge on the final payment due date or closer to the scheduled departure date, the Cancellation Fee will be the full program price. In addition to and not in lieu of the foregoing, a Cancellation Fee equal to 100% of the carrier charge applies to all non-refundable airfares due to your cancellation made at any time prior to the scheduled program departure date, as applicable. Refunds, if any, of any Payments in excess of the aggregate Cancellation Fee shall be processed within 30 calendar days of our receipt of your written notice.

For complete Terms & Conditions, visit [terms.orbridge.com](http://terms.orbridge.com) | Copyright © 2020 Orbridge, LLC | [www.orbridge.com](http://www.orbridge.com) | (866) 639-0079

\*Special group rate; limited offer. Rates are per person based on double occupancy except where noted as Single, in U.S. dollars. Airfare not included. Single and Triple availability limited. Pre-tour rate is per person based on double occupancy except where noted as Single, in U.S. dollars. Single availability limited. Airfare, including flights from Buenos Aires to Ushuaia, is not included. Post-tour rate is per person based on double occupancy, in U.S. dollars. Internal round-trip airfare between Buenos Aires and Iguazú Falls is included. General airfare, and the airfare for the internal flight from Ushuaia to Buenos Aires, is not included. \*\*A complement to the educational component of this journey, Expedition Libraries are curated collections of useful resources and background reading tailored to this program. Place your deposit on or before the specified date, and one Expedition Library per room will be sent after receipt of final payment. Libraries may be purchased; please call for details.

CUT HERE

# ANTARCTICA DISCOVERY

JANUARY 16-27, 2021

Special Alumni Rate: **Save more than \$800** per couple

**FREE Expedition Library**  
AN EXCLUSIVE EARLY  
RESERVATION BONUS

Reserve your space by

**March 27, 2020**

to receive the FREE Orbridge Expedition  
Library we've assembled for this program.\*\*



Texas Christian University  
TCU Box 297044  
Fort Worth, TX 76129

PRSR STD  
U.S. POSTAGE  
PAID  
PERMIT NO. 825  
SAN DIEGO, CA